

To obtain warranty, or out-of-warranty service, call Lidatek's customer assistance line at (425) 806-2044. Freight to Lidatek for product under warranty is to be paid by customer. Return freight to customer for covered warranty product will be paid by Lidatek. A copy of delivery and/or sales receipt is required to determine

Address:
Lidatek
Attn: Warranty Dept
16110 Woodinville-Redmond Road NE
Suite 3, Woodinville, WA 98072

9am - 5pm (PST), Monday-Friday
Phone: (425) 806-2044 Fax: (425) 806-2046
If you need warranty service assistance, call, fax or write to Lidatek:

SERVICE:

CAUTION - The use of optical instruments (such as magnifiers) with this product will increase eye hazard.

Lidatek warrants the LaserECHO to be free from defects in materials and workmanship under normal use for a period of one (1) year from the date of original purchase when installed by a professional installer or ninety (90) days from original returned to Lidatek within ten (10) business days from date of purchase. This warranty is limited to the original purchaser and is not transferable. Warranty is not valid if serial number has been removed, if product has been subject to physical abuse or improper installation, or if repair has been attempted by someone other than authorized personnel. Expenses incurred by buyer for installation or removal of the product for warranty service are not covered. To obtain service, the product must be returned to Lidatek in original packaging, along with written description of the problem. Lidatek's responsibility under warranty period is limited to repair or replacement of the product at the sole discretion of Lidatek. Lidatek disclaims all other warranties expressed or implied, including warranties of merchantability and fitness for any particular purpose whatsoever, and no other remedy shall be available, including without limitation, incidental, or consequential damages. Some states do not allow this exclusion or limitation of incidental or consequential damages so the above limitation or exclusion may not apply. This warranty gives you specific rights. You may have other legal rights which vary from state to state.

WARRANTY:

Congratulations on your purchase of the Lidatek LaserECHO LE-30. The LE-30 system is the result of years of sophisticated research and development, evidenced by a number of patents on our technology. Since 1995, Lidatek has been committed to producing the best laser defense in the world. Please read this manual carefully before installing and using your LE-30.

INTRODUCTION:

LaserECHO is designed and manufactured in the United States. The LaserECHO is a safe, patented, and effective tool to help drivers. However, this type of product may be limited or prohibited in some jurisdictions. Check local and state laws before operating.

warranty period. Out-of-warranty product freight to be paid both ways by customer.

Box Contents

- 1) LE-30 Transponder with male DIN connector
- 2) Interface module
- 3) Transponder cable with female DIN connector
- 4) Fused power cable with switch
- 5) Speaker cable
- 6) Status LED cable
- 7) 8 inch (205 mm) mounting strap
- 8) Mounting/Hardware Kit
- 1 x Car mounting bracket (six holes)
- 1 x Transponder mounting bracket (2 holes)
- 2 x 4 inch (105 mm) mounting strap
- 2 x M6 x 10 mm machine screw
- 2 x M5 x 6 mm machine screw
- 2 x #14 x 1/2 inch tapping screw
- 2 x #10 x 5/8 inch tapping screw
- 2 x M6 flat washer
- 2 x M5 flat washer
- 2 x M6 lock washer
- 2 x M5 lock washer
- 2 x M6 hex nut
- 1 x Bubble level
- 1 x Female T-tap connector
- 1 x LED connector housing
- 6 x Double-sided adhesive tape
- 12 x Wire Zip-Ties

LaserECHO Manual

LaserECHO LE-30

With the exception of powering up, nothing will be heard from the LE-30 and only a green LED should be visible under normal driving conditions.

Only in the event that laser (LIDAR) pulses are detected, will the LE-30 sound an alarm from the speaker while simultaneously flashing the LED red. During this alarm time, the system's transponder(s) will "lock on" and ECHO back pulses to the offending gun. This period of protection will last for 5 seconds and automatically shut itself off allowing the driver to concentrate on maintaining safe control of the vehicle.

Following the alarm, the laser gun will be allowed to successfully measure your vehicle's speed to avoid suspicion on the part of the laser gun operator. This period will last 30-seconds indicated by an amber color on the LED.

After exiting the speed trap, the LE-30 will re-enter standby mode. This will be indicated by two beeps from the speaker accompanied by two red flashes on the LED followed by a steady green color. The LE-30 is now ready for its next laser encounter.



16110 Woodinville-Redmond Rd NE
Suite 3
Woodinville, WA 98072
toll free 888-324-6911
office 425-806-2044
fax 425-806-2046

www.lidatek.com



LaserECHO LE-30

Pass the transponder cable into vehicle passenger compartment through an existing rubber grommet or pass-through hole being careful to ensure the cable will not wear on exposed metal edges.

Warning> Do not cut or splice into this cable as it can affect product performance and will void your warranty.

Speaker Installation:
Position the alarm speaker under the dash board or center console. The speaker can be mounted just out of sight. It can be secured with included zip ties or double-sided tape. Route speaker wires to Interface module location under the dash.

LED Installation (optional):
If the optional multifunction LED is desired, a mounting location on the dash or center console will be required. The location should be within view of the driver and ideally not in direct sun light for best visibility. After the mounting location has been determined, drill a 15/64 (6 mm) hole. Feed the LED wires through the hole from the front side of the dash. Route the wires down to the Interface module location. Plug the two connector pins into the supplied connector housing (see figure 5). A click should be heard when the pins are correctly installed.

Power Connections & Switch Location:
Locate a power source that is active ONLY when your car's ignition is turned to the "accessory" position. The supplied wire tap can be used to connect to the power source. Or for a better connection, the wires can be soldered. For the ground connection, locate an existing bolt to terminate the grounding ring. The power switch should be installed within reach of the driver, **but not necessarily within view**. A 15/64 inch (6mm) hole can be drilled for mounting the switch into the dash. If a more discreet location is desired, the switch can be installed into one of the supplied four inch (105mm) mounting rails and screwed up behind the dash.

Tip> Bending the mounting rail can help better orient the power switch into a more convenient and accessible location.

Plugging it all Together:
Plug the speaker, LED, transponder and power connectors into the Interface module (see figure 6). Front mounted transponders should be plugged into the T1 and T2 ports. Secure the Interface module up under the dash with zip ties.

Warning> Make sure the Interface module and all connected cables to not interfere with the pedals or any other moving parts under the dash as this may create an unsafe driving condition.

Powering up the System:
Only after double-checking all wiring connections, turn the ignition key to one of the "on" positions. Within five seconds, a beep from the speaker should be heard along with one red flash from the LED.

Note> It may be necessary to turn system power switch to the on position if no beeps are heard.

Following the first power-up beep/flash, there will be a one second delay followed by one beep/flash for each transponder that is plugged in and working.

For example; if two transponders are connected; Beep – delay – beep – beep should be heard. If installed, each beep will be accompanied with one red flash of the LED.

Immediately following the last beep, the LED will turn to green indicating the Laser ECHO system is in standby mode and ready to work.

One Transponder vs. Two:
A single LE-30 transponder is designed to provide protection for most small to mid-sized vehicles. Larger vehicles, or individuals who desire the highest level of protection may choose to use two front-mounted transponders.

Mounting Location:
Single units should be mounted near the center of the vehicle either above or below the bumper. With two transponders, it is best to mount them 20-24 inches (50-60 cm) apart, equidistant from the center of the car. For proper operation, transponders must be mounted horizontally (see Fig. 1-3) and with a clear unobstructed view of the road ahead. For a more discreet install, transponders can be recessed approximately one inch (25 mm) behind your grill fascia or under front bumper.

Transponder Installation:
If a flat horizontal surface is available above or below the transponder mounting location, you can use the included double-sided industrial tape to attach the Car Bracket (with six holes) to the vehicle (see figure 1, option 1). Otherwise the bracket can be secured with screws (see figure 1, option 2).

Note> Thoroughly clean surface and allow 12 hours for tape adhesive to fully set.

Tip> If necessary, a twisting motion can be used to remove a bracket or transponder secured with tape adhesive.

If no flat surface is available, the Car Bracket can be suspended horizontally from one of the included mounting rails. Either the four inch (105 mm) or eight inch (205 mm) rail should be fastened to a solid part of the car. The Car Bracket can then be bolted to the mounting rail with the supplied hardware (see figure 2).

Alternatively, if it is possible to install the mounting rail vertically, the Car Bracket can be eliminated (see figure 3).

Attach the Transponder to the Transponder Bracket with the double-sided adhesive tape. **Apply the tape to the non-labeled side of the transponder.**

Never apply tape adhesive to the LE-30 transponder label.

Warning> Do not remove or destroy identification label as this will void your warranty.

The transponder may be mounted to either side of the bracket depending on your specific application requirements (see figures 1-3).

The transponder(s) should be mounted aiming straight and level. This can be verified by using the supplied bubble level while your car is parked on a flat level surface.

Routing the Transponder Cable(s):
The weather-proof DIN connector should be connected (see figure 4) and positioned high up near the front of the engine compartment to ease in the removal of the transponder unit if necessary.

Route the transponder cable around engine compartment toward firewall. The cable should be secured in place with the supplied zip ties.

Warning> When routing cables, be sure to avoid hot and moving engine components. Also try to avoid noisy electrical components such as the distributor, spark plug wires and HID light ballasts.

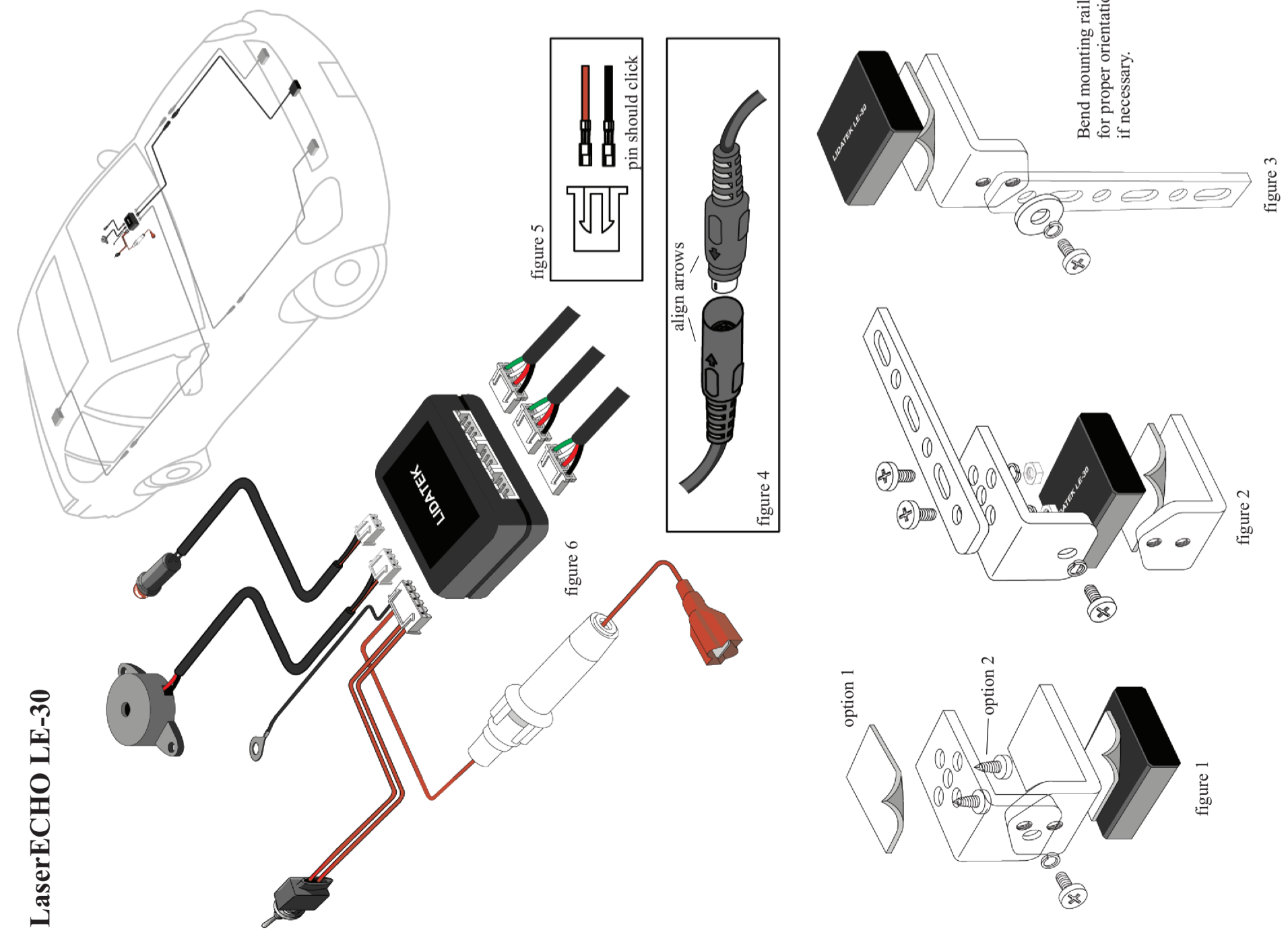


figure 5

figure 6

figure 4

option 1

option 2

figure 1

figure 2

figure 3